

SOLAR USB CHARGER

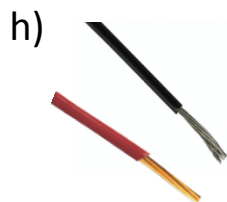
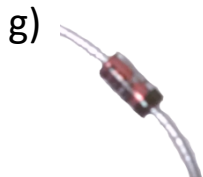
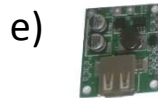
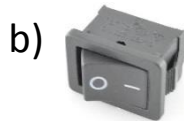
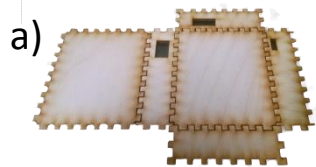
kit instructions



Solar USB Charger Kit Instructions

Kit Includes:

- (a) Laser Cut Box
- (b) Switch
- (c) Lipo Battery
- (d) Charging Module
- (e) USB Booster
- (f) Solar Cell
- (g) Rectifying Diode
- (h) Wires



Tools Needed:

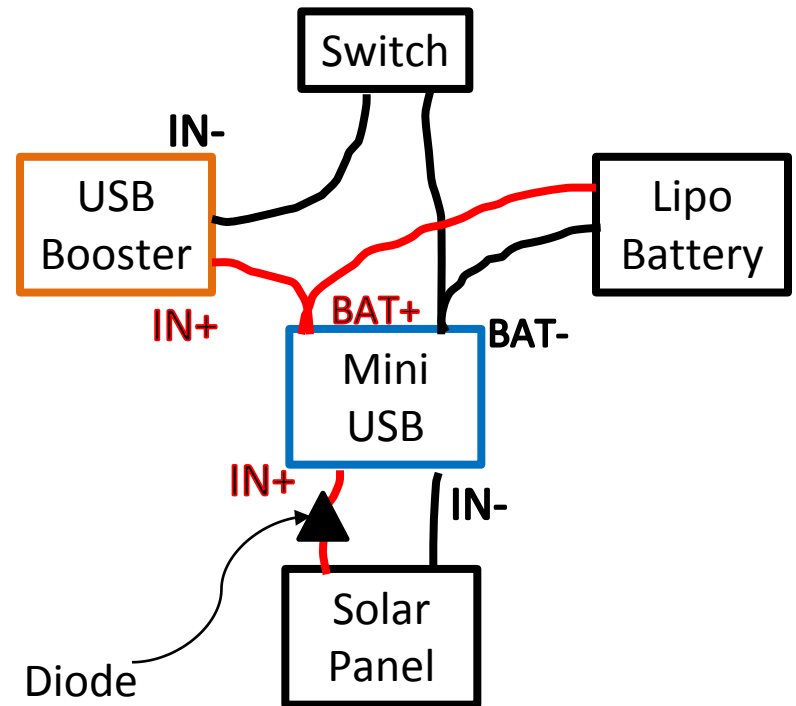


Soldering iron



Glue gun

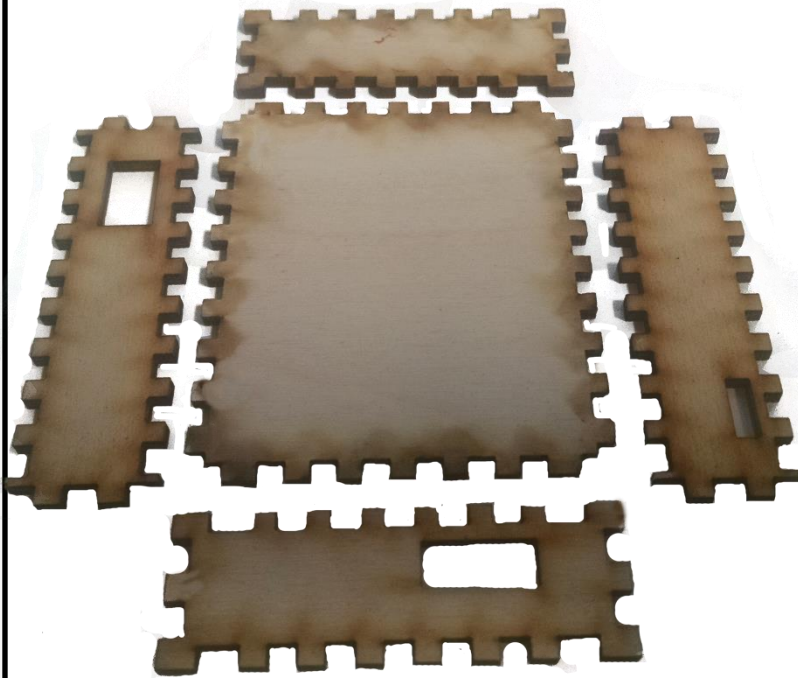
Wiring Diagram



Solar USB Charger Kit Instructions

1

Glue 5 of the 6 box sides together, do not glue "top" piece with solar panel wire holes



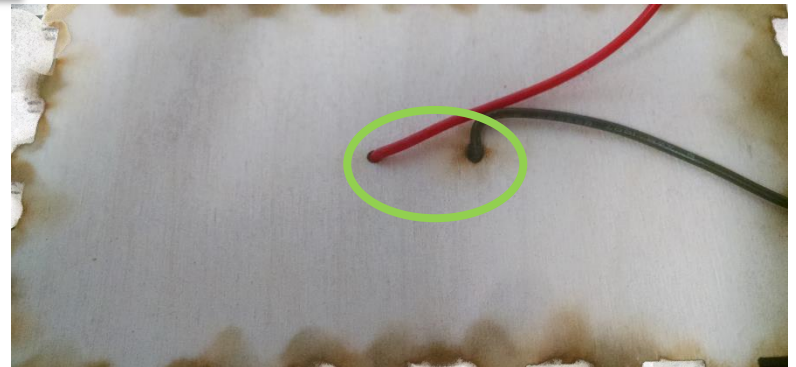
2

Solder 1 red wire to the (+) terminal and 1 black wire to the (-) terminal on the back of the solar panel



3

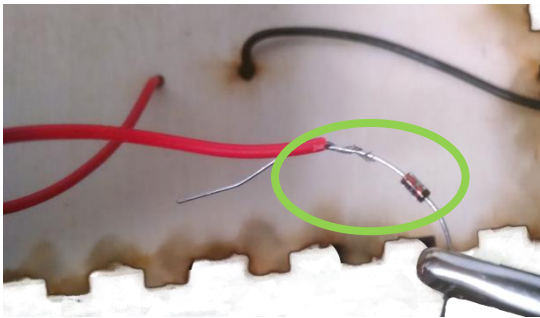
Pull wires through top panel of box.



Solar USB Charger Kit Instructions

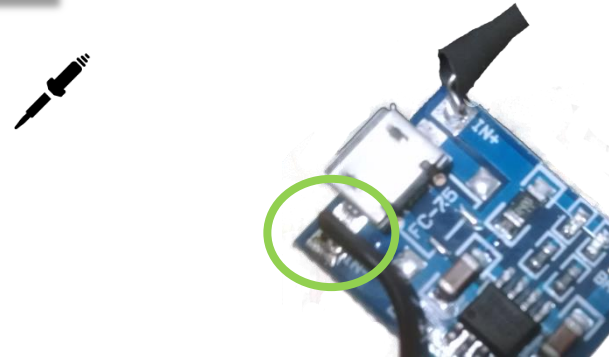
4

Solder diode (g) to red wire from panel, black line faces away from panel



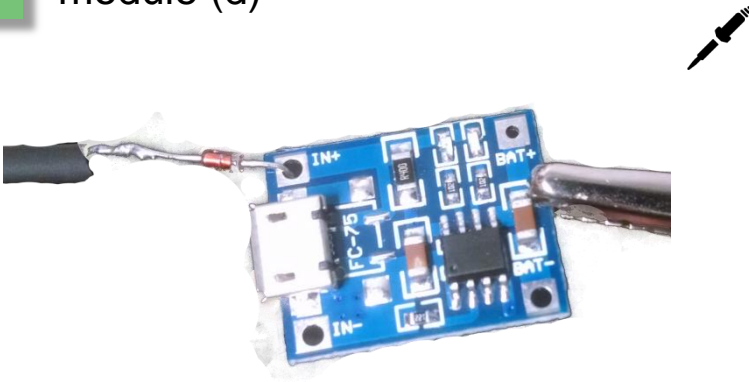
6

Solder black solar wire to the IN- of charging module



5

Solder diode end to IN+ of charging module (d)



7

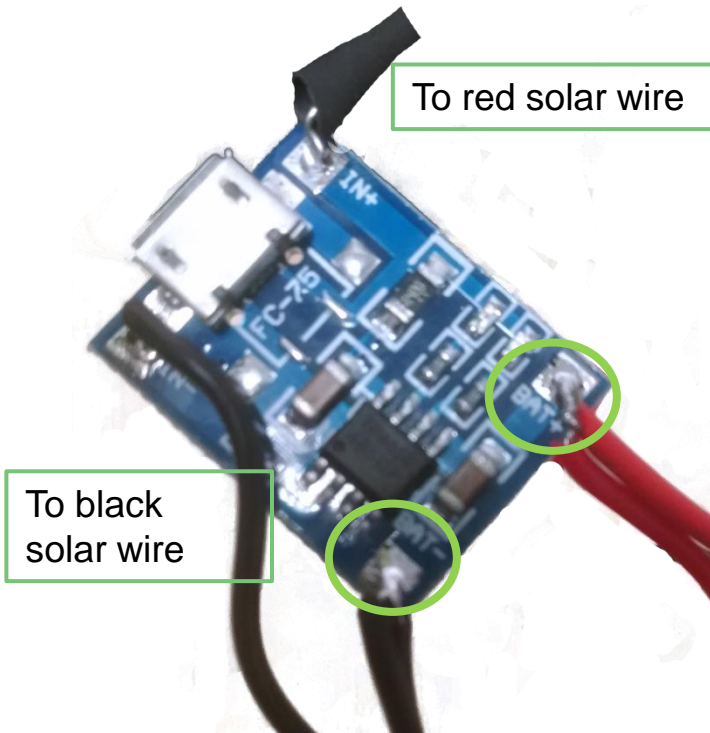
Solder a set of 2 black wires together and then a set of 2 red wires together



Solar USB Charger Kit Instructions

8

Solder set of black wires to BAT- and set of red wires to the BAT+ terminals.



9

Solder 1 black wire from charging module (BAT-) to the black wire on the Lipo battery. **Be sure to slip heat shrink over wire before you twist together.**



10

Solder 1 red wire from charging module (BAT+) to the red wire on the Lipo battery. **Be sure to slip heat shrink over wire before you twist together.**

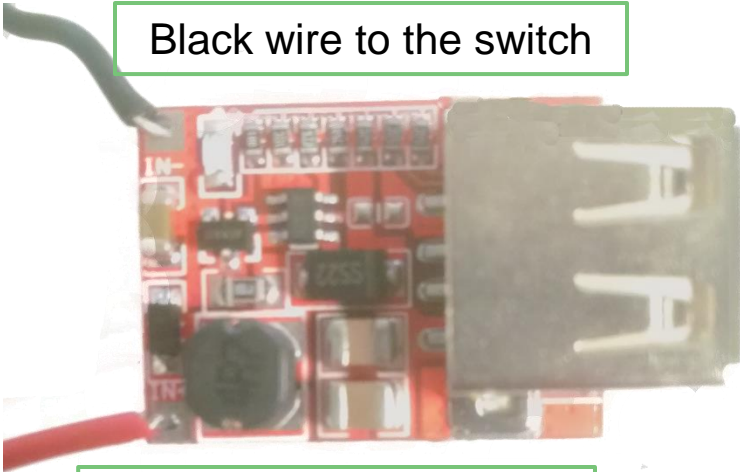


Solar USB Charger Kit Instructions

11

Solder the available black wire from the switch to the (IN-) terminal on the USB booster (part e*). Solder the available red from charging module to the (IN+) terminal on the USB Booster.

Black wire to the switch



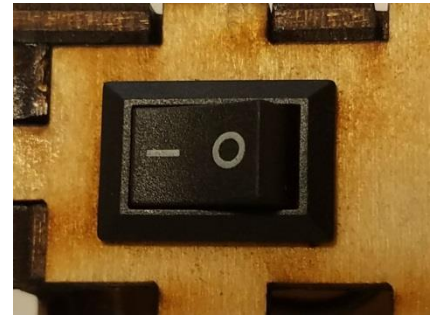
Red wire to charging module

*USB booster may be on a red or green board



12

Before soldering to switch, push into port on wood box from the outside in.



13

Solder black wire from USB booster to the switch



Solar USB Charger Kit Instructions

14

Solder remaining black wire from charging module BAT- to the other switch pin.



15

CHARGING:

Plug a mini USB cable into the charging module port (the small one). Takes ~2hours to fully charge Lipo from empty. Or set panel in sunlight, takes ~ 14hours to fully charge.

To charge your device, plug your charging into the standard USB port, turn on switch to direct charge from battery to device.

