

# HXP-an

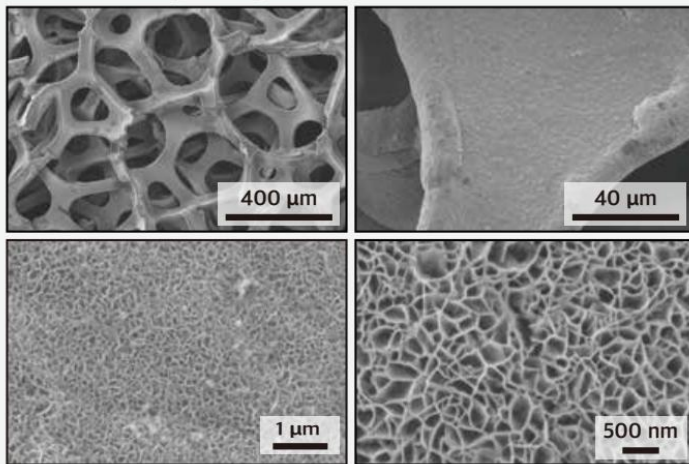
AEMWE anode

## Specifications

<b>Materials</b>	Ni-Fe@Ni foam
<b>Pore size</b>	130 ppi (pore per inch)
<b>Porosity</b>	95 ~ 98%
<b>Thickness</b>	0.1 ~ 35 mm
<b>Dimensions</b>	Length < 300 mm, Width < 200 mm

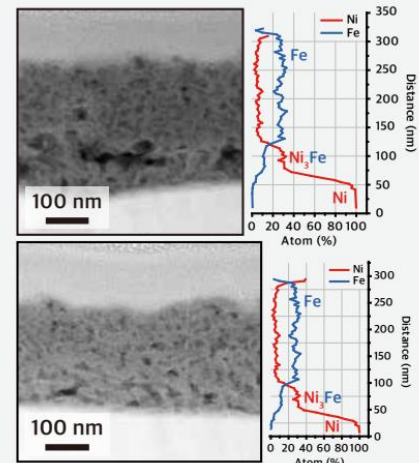
## Properties

### Surface morphologies



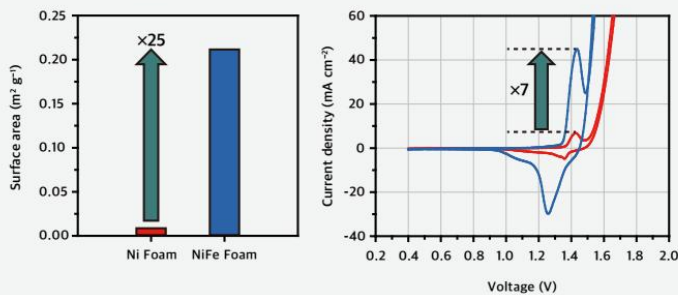
\*Large electrochemical surface area

### Cross-section

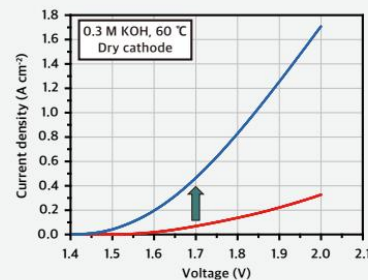


\*Fast OER kinetics

### Maximizing Surface Area



### Impact of Anode in AEMWEs



\*Anode design is crucial at low current regime

Please contact us at [sales@fuelcellstore.com](mailto:sales@fuelcellstore.com) for the product inquiries.