

HXP-ca

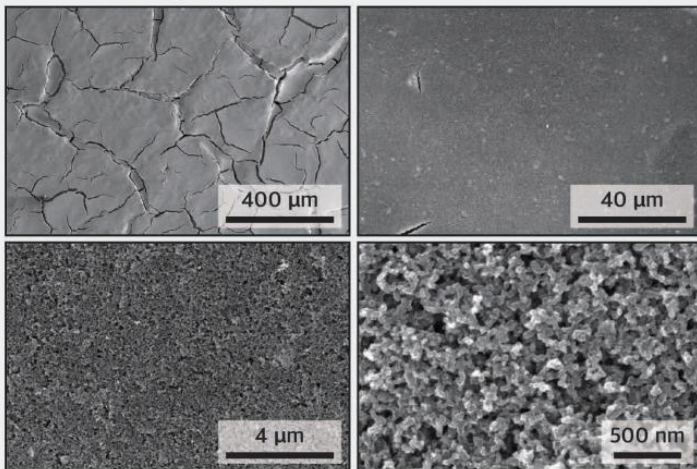
AEMWE cathode

Specifications

| | |
|-------------------------|--|
| Materials | Pt/C + binder (Catalyst layer), Carbon paper (Gas diffusion layer) |
| Catalyst loading | 0.2 mg _{pt} cm ⁻² (Measured by XRF) |
| Thickness | 260 ± 20 μm |
| Area density | 105 ± 10 g m ⁻² |
| Dimensions | Length < 300 mm, Width < 200 mm |

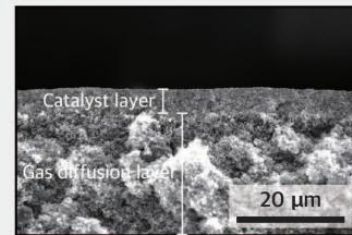
Properties

Surface morphologies



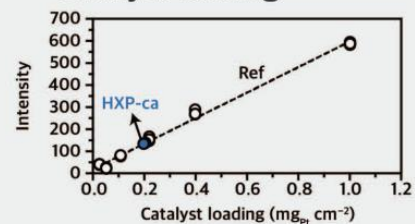
*Homogeneous ionomer distribution
*Uniform pore structure

Cross-section

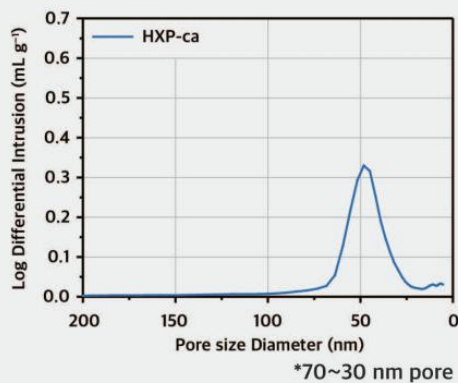


*Low roughness

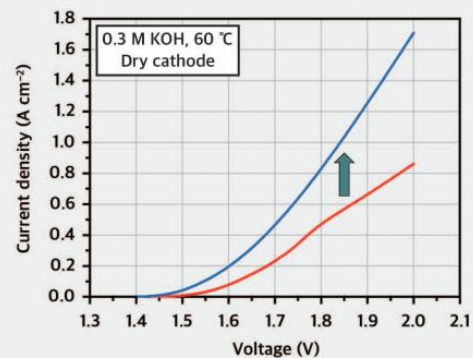
Catalyst loading



Pore structure



Impact of Cathode in AEMWEs



*Cathode design is crucial in dry cathode operation

Please contact us at sales@fuelcellstore.com for the product inquiries.