

# HXS-2

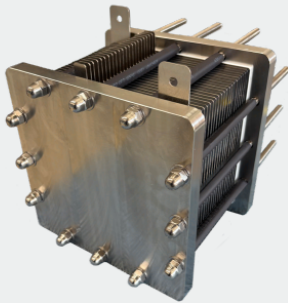
AEMWE stack

## Specifications

<b>H<sub>2</sub> Production rate</b>	500 L h <sup>-1</sup>	<b>Dimensions</b>	190 x 210 x 215 mm
<b>Efficiency (HHV)</b>	82% (BOL, beginning of life)	<b>Weight</b>	19 kg
<b>Operating condition</b>	0.3 M KOH, 60 °C	<b>Electrodes</b>	HXP-an, HXP-ca
<b>Power consumption</b>	~2.1 kW	<b>Membrane</b>	Polymer electrolyte
<b>Water consumption</b>	420 mL h <sup>-1</sup> (50 A operation)	<b>Other</b>	Dry-cathode, 2400 sccm

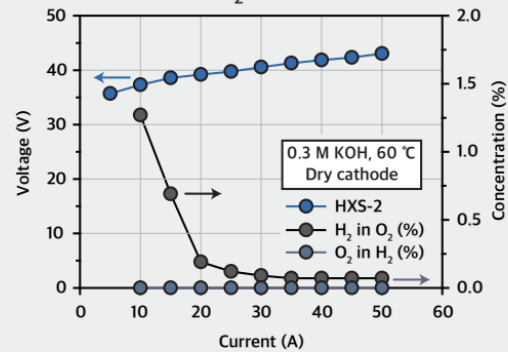
## Properties

Optical image

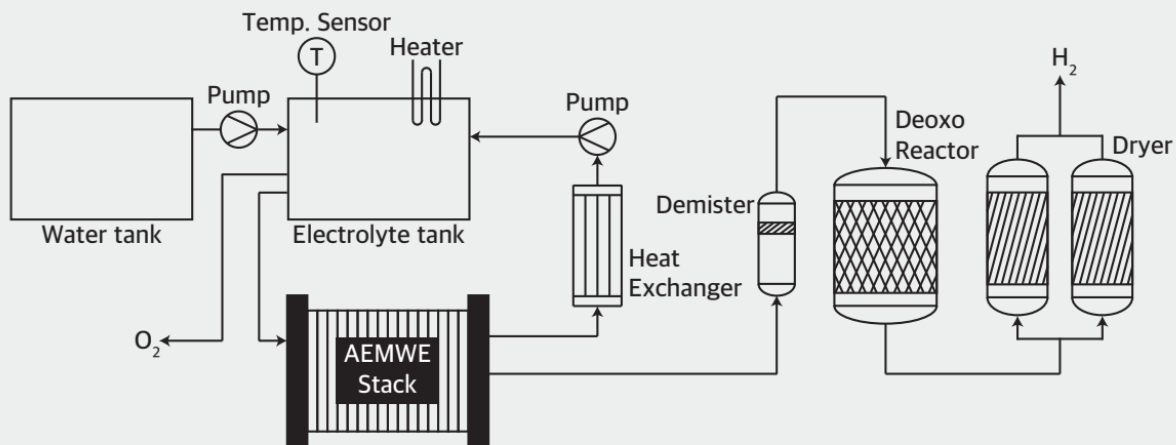


- High performance
- High durability
- Dry-Cathode
- High-pressure H<sub>2</sub> production
- High-purity H<sub>2</sub> production
- Fast load response
- Reusable hardware

## Performance, H<sub>2</sub> concentration



## BOP System Guide



Please contact us at [sales@fuelcellstore.com](mailto:sales@fuelcellstore.com) for the product inquiries.