

Technical Data Sheet for TSAQ-CVM30 Cell Voltage Monitor



Feature

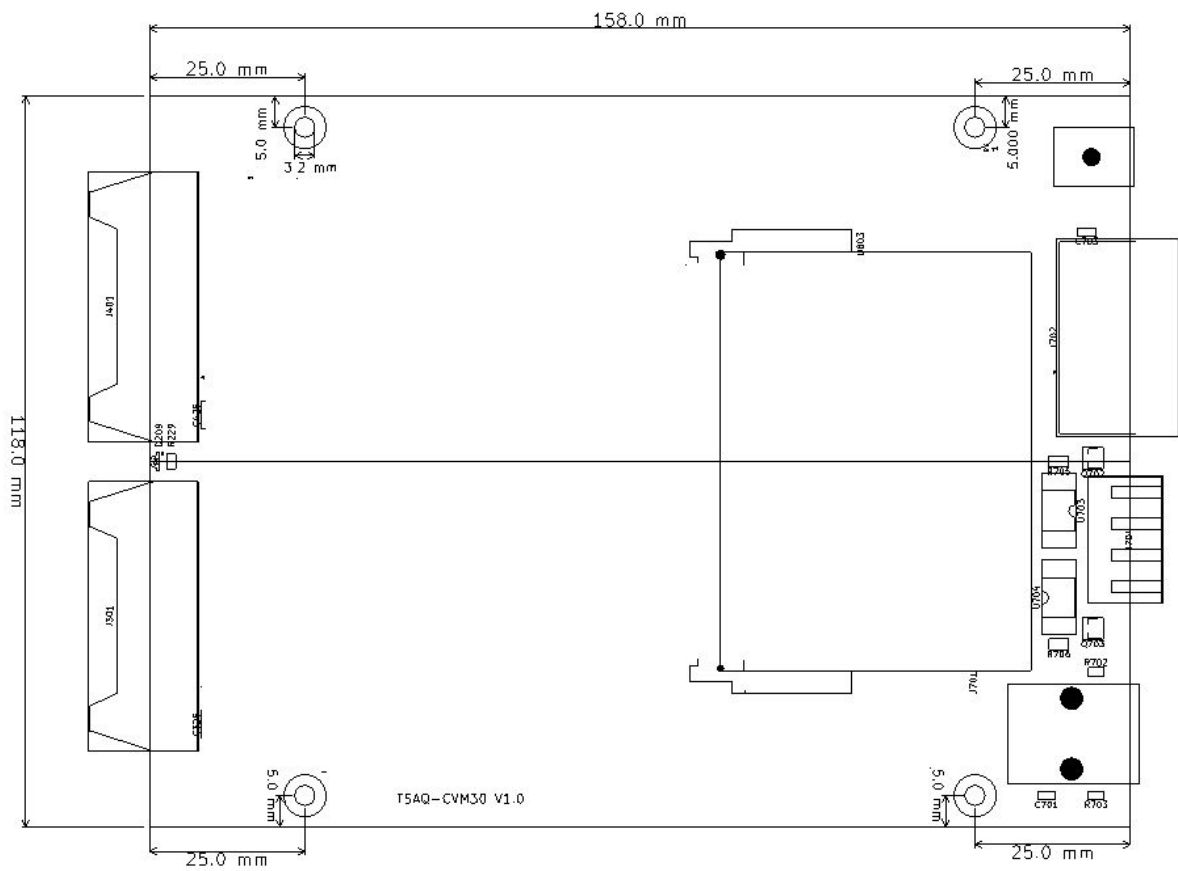
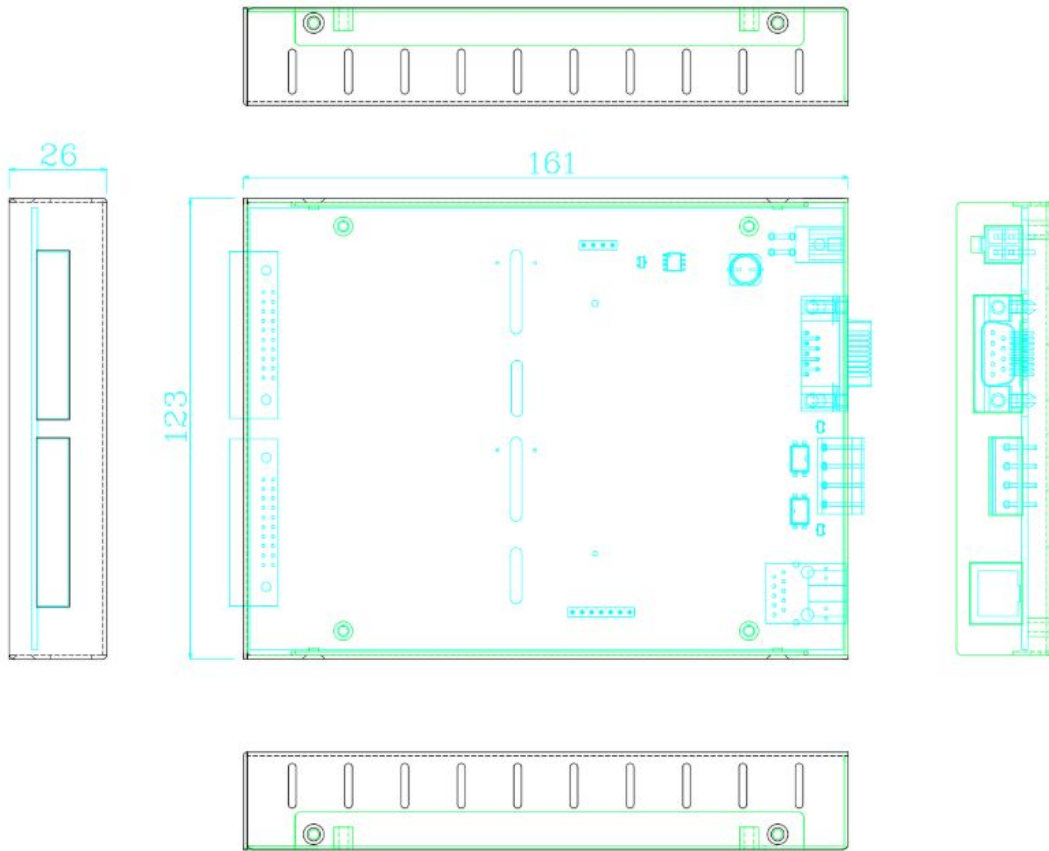
- 30 channels stack voltage inputs
- $\pm 5\text{V}$ input range
- 16-bit ($\pm 154\mu\text{V}$) resolution
- 0.02% ($\pm 1\text{mV}$) accuracy
- 1KV isolation
- $\pm 80\text{V}$ common mode rejection
- 1KSa/s sample rate
- DC12V input power

Interface

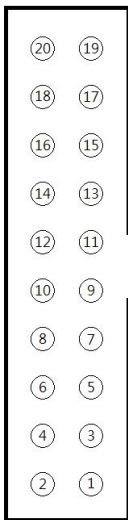
- 1000/100M Ethernet
- CAN Bus
- Optocoupler Output x2

Dimension

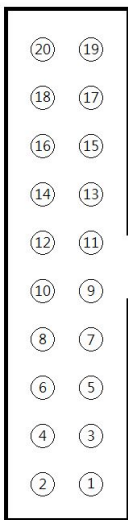
161mm × 123mm × 26mm



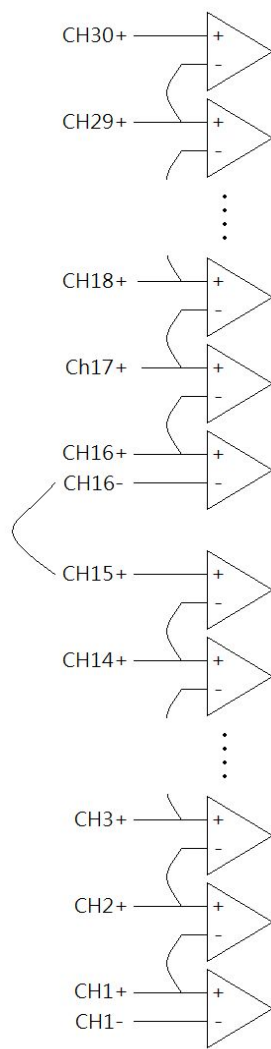
Analog Input



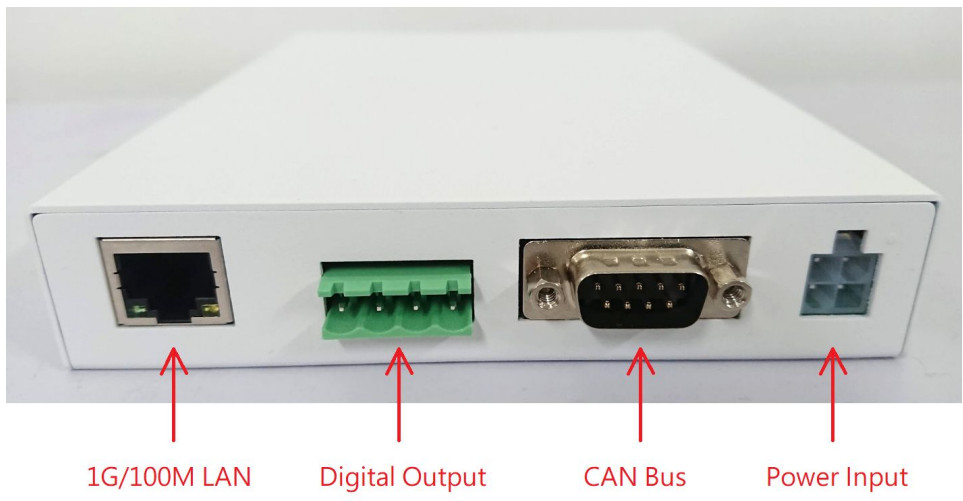
20	NC
19	NC
18	NC
17	CH30+
16	CH29+
15	CH28+
14	CH27+
13	CH26+
12	CH25+
11	CH24+
10	CH23+
9	CH22+
8	CH21+
7	CH20+
6	CH19+
5	CH18+
4	CH17+
3	CH16+
2	CH16-
1	NC



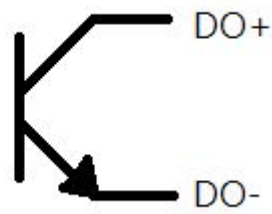
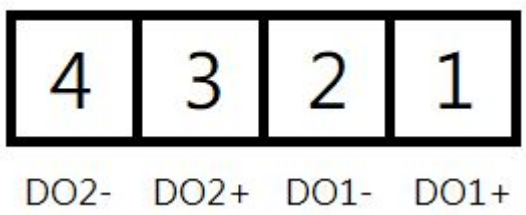
20	NC
19	NC
18	NC
17	CH15+
16	CH14+
15	CH13+
14	CH12+
13	CH11+
12	CH10+
11	CH9+
10	CH8+
9	CH7+
8	CH6+
7	CH5+
6	CH4+
5	CH3+
4	CH2+
3	CH1+
2	CH1-
1	NC



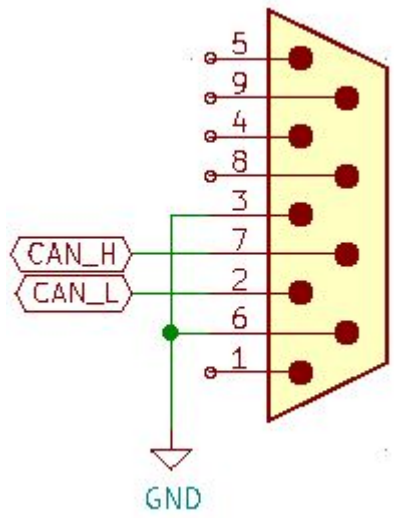
Interface



Digital Output



CAN Bus



Power

